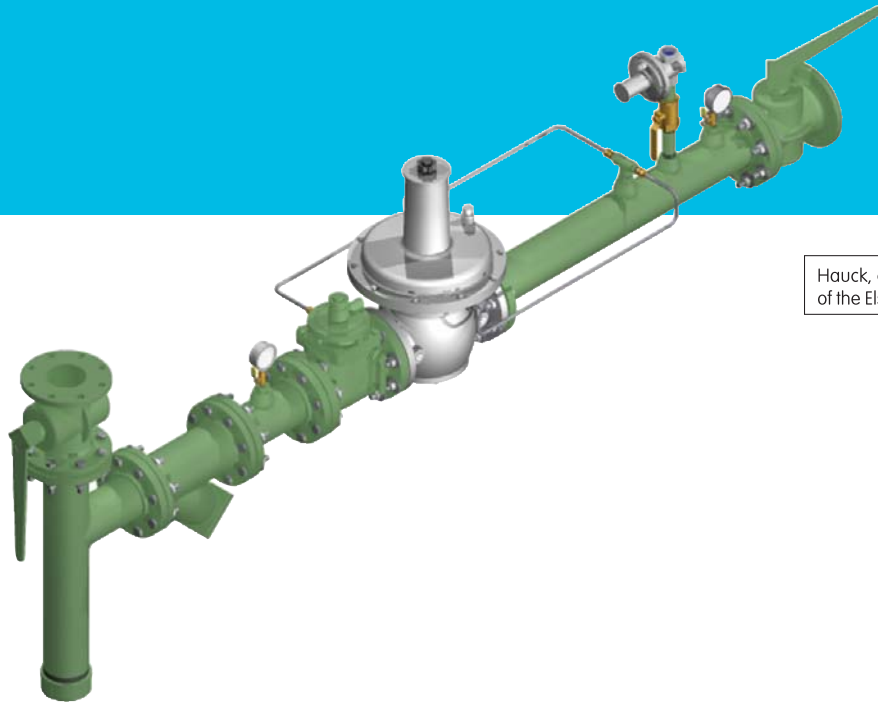




RGM

Regulator Gas Manifold

RGM-1
Edition 09-08



Hauck, a product brand
of the Elster Group



- Prepiped and assembled for easy installation
- Suitable for single and multiple burner applications
- Provides overpressure protection and precise outlet pressure control
- Combine with Hauck's PGM, safety shutoff valve manifolds, for compact regulator and safety functionality
- Meets NFPA requirements which simplifies insurance approval for most burner installations
- Integrated pressure gauges and shutoff valves simplify leak testing and system troubleshooting
- Components optimally sized and preset to facilitate fast, trouble free start-up

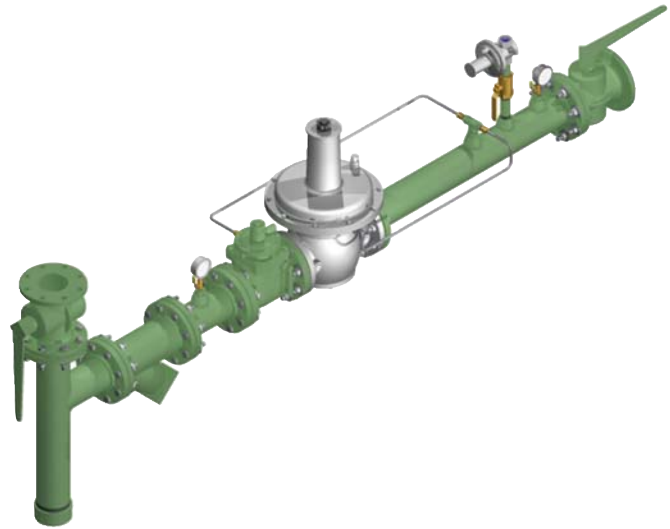


The Hauck Regulator Gas Manifold is a factory assembled and pre-piped gas train that permits easy, fast installation. Each component has been optimally sized to provide for accurate and consistent gas pressure supply throughout the combustion system operating range. The RGM also offers overpressure protection to guard against damage to downstream components in the event of a main gas pressure regulator failure.

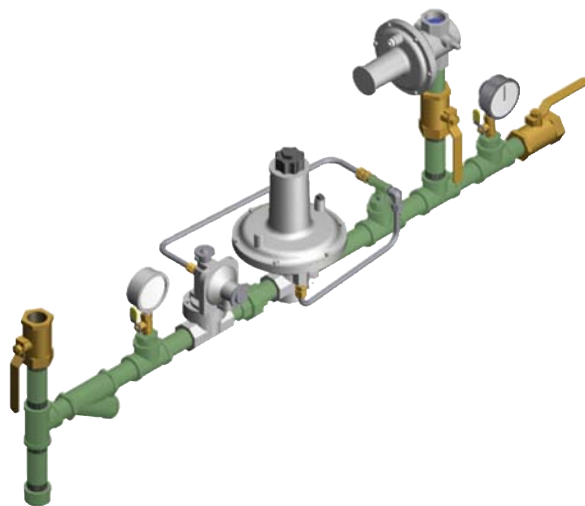
The Hauck RGM consists of isolation valves, sediment trap, strainer, pressure gauges, slam shut safety shutoff valve, main fuel gas regulator, a pressure relief valve and interconnecting piping.

The RGM is an integral part of a fuel gas supply system that meets NFPA requirements. In the event of regulator failure or system over-pressurization, the slam shut safety shutoff valve closes to prevent downstream component damage. Additional downstream components required per NFPA include Hauck's Pre-piped Gas Manifolds (PGMs) which are comprised of high and low gas pressure switches, a pressure gauge, automatic shutoff valves, an outlet manual shutoff valve, and leak test cocks.

Additional options include skid or rack mounted RGMs alone or in combination with pre-wired PGMs to facilitate insurance agency approvals, installation and startup.



2440 Series RGM



2410 Series RGM

For additional information on this product, visit our website at:

www.hauckburner.com

Hauck Manufacturing Company
POB 90
Lebanon, PA 17042

T +1 717-272-3051
F +1 717-273-9882
info@hauckburner.com

Hauck, a product brand
of the Elster Group



Copyright © 2008 Elster Group



RGM REGULATOR GAS MANIFOLD 2400 SERIES (INDUSTIAL)

MODEL NO.	CONN. SIZE	Inlet Pressure		
		15 psig	10 psig	5 psig
		(scfh)		
2410	1 NPT	3,150	2,510	1,500
2415	1-1/2 NPT	10,800	8,990	6,200
2420	2 NPT	19,300	16,400	11,800
2430	3 NPT	38,200	32,300	23,300
2440	4" FLG	63,400	54,300	38,600

NOTES:

1. 2000 Series RGM's used in conjunction with PGM's meet NFPA requirements for single burner or unison light-off multiple burner industrial applications.
2. Flange connections are ANSI 125lb rated flanges.
3. Maximum inlet pressure is **15 psig**. Consult Hauck for higher inlet pressure options.
4. Flow based on natural gas with 0.59 s.g., 60°F, **inlet pressure as specified, and nominal 2 psig outlet pressure** from the RGM; consult Hauck for different application conditions.
5. To calculate Btu/hr throughput, multiply natural gas flow in scfh by actual higher heating value (HHV) in Btu/ft³.

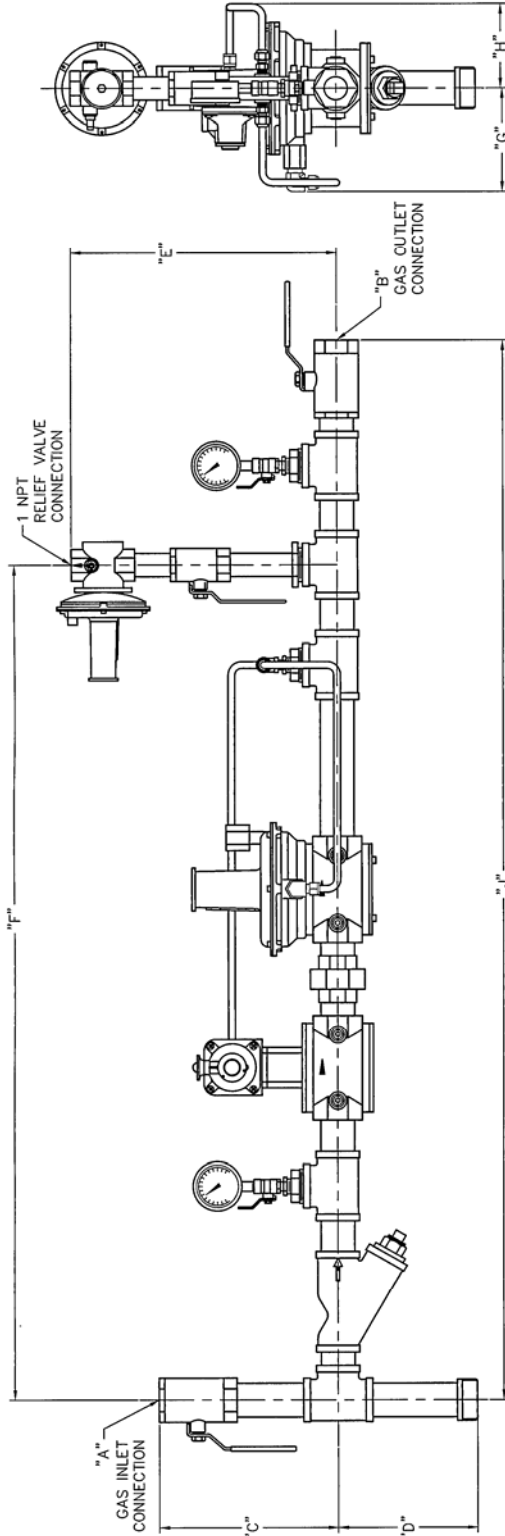
(See Reverse Side for Metric Capacities)

In accordance with Hauck's commitment to Total Quality Improvement, Hauck reserves the right to change the specifications of products without prior notice.



DIMENSIONS

**RGM REGULATOR GAS MANIFOLD
2400 SERIES (INDUSTIAL)**



DIMENSIONS

MODEL NO.	A	B	C	D	E	F	G	H	J
RGM2410	1 NPT	1 NPT	8 3/8	5 3/4	13 15/16	36 5/16	3 3/4	4 5/8	47 3/16
RGM2415	1 1/2 NPT	1 1/2 NPT	10 1/16	7 13/16	14 15/16	47 1/8	5 5/16	4 3/4	59 13/16
RGM2420	2 NPT	2 NPT	10 7/16	10 1/8	15 1/4	57 15/16	6 3/8	5 3/4	72 3/8
RGM2430	3 NPT	3 NPT	13 7/16	14 1/8	15 15/16	78 3/4	7 7/16	7	105 13/16
RGM2440	4 ANSI	4 ANSI	18 13/16	19 3/16	16	83 5/8	8 9/16	10	109 1/4

Y8335
(NOT TO SCALE)

(See Reverse Side for Metric Dimensions)

In accordance with Hauck's commitment to Total Quality Improvement, Hauck reserves the right to change the specifications of products without prior notice.