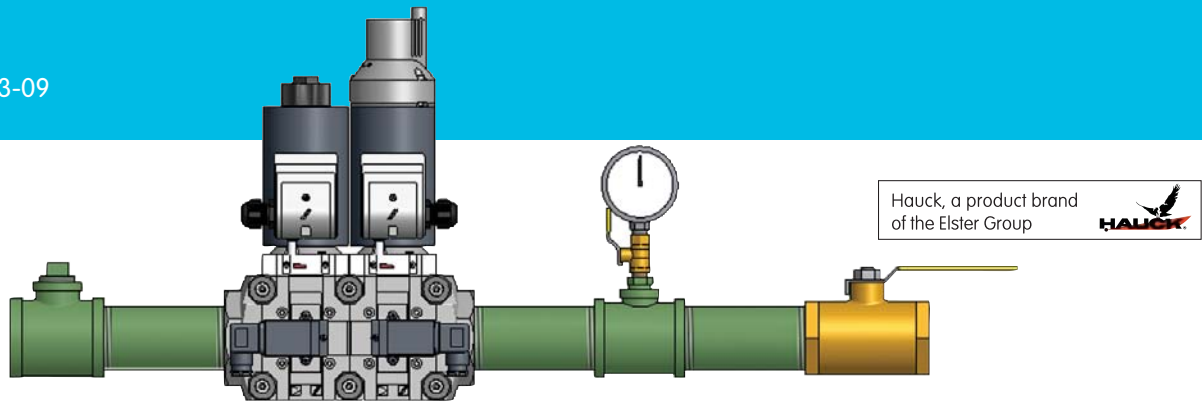


PGM

Prepiped Gas Manifold

PGM-1
Edition 03-09



- Prepiped and assembled for easy installation
- Suitable for single and multiple burner applications
- Automatic safety shutoff valves with visual indication and proof of closure
- High and low gas pressure switches
- Valve leakage test cocks allow for easy leak testing
- Optional automatic vent valve
- Meets NFPA requirements which simplifies insurance approval for most burner installations
- Integrated valve tightness control (valve proving) available

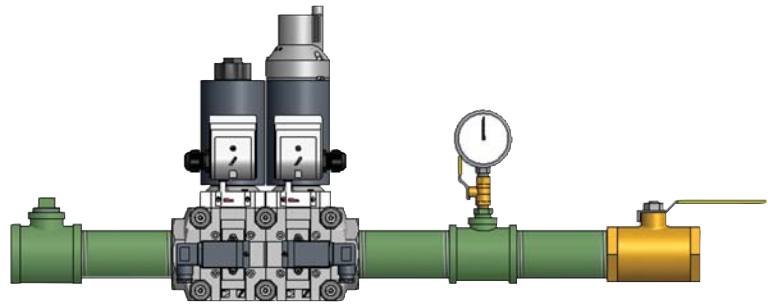
The Hauck Prepiped Gas Manifold is a factory assembled prepped gas train that permits easy, fast installation.

For single burner industrial applications, two different 2000 series PGMs are available with dual automatic safety shutoff valves. For multiple burner industrial applications, two different 6000 series PGMs are available with a single automatic safety shutoff valve. For asphalt plant operations, the 3000 series PGM is available with dual safety shutoff valves. For PGMs with manual reset shutoff valves, contact Hauck.

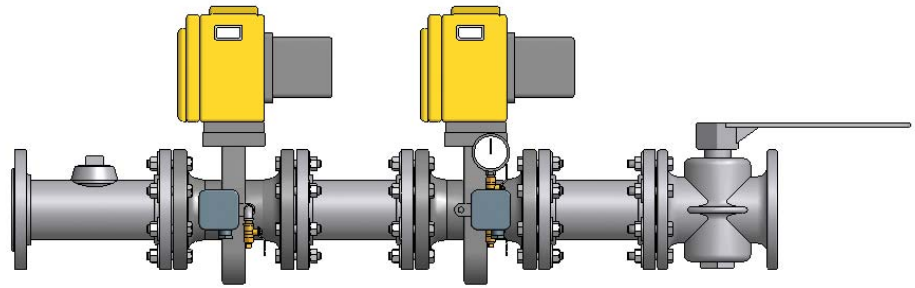
The Hauck PGM consists of high and low gas pressure switches, gas pressure gauge, automatic shutoff valves, outlet manual shutoff valve, leak test cock(s), interconnecting piping, and pilot line connection. All manifolds include test cocks that permit testing the main gas shutoff and blocking valves for leakage.

An automatic vent valve option is available to meet IRI requirements and must be specified at time of order.

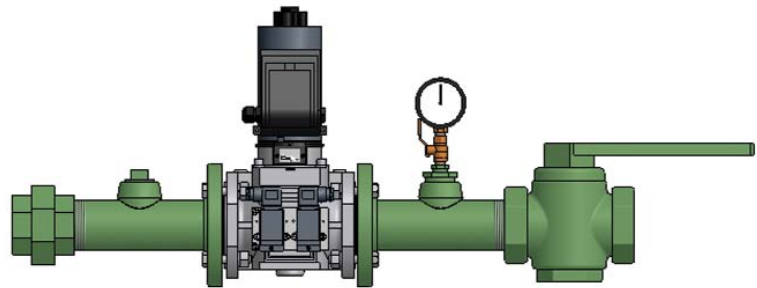
The PGM is an integral part of any fuel gas supply system that meets NFPA requirements. Additional upstream components required per NFPA are available as prepped regulator gas manifolds (RGMs) which include an equipment isolation valve, sediment trap, strainer, fuel gas pressure regulator and over pressure protection.



2400 Series Industrial PGM



3100 Series Asphalt PGM



6400 Series Industrial PGM

For additional information on this product, visit our website at:

www.hauckburner.com

Hauck Manufacturing Company
POB 90
Lebanon, PA 17042

T +1 717-272-3051
F +1 717-273-9882
info@hauckburner.com

Hauck, a product brand
of the Elster Group



Copyright © 2009 Elster Group



**PGM PREPIPED GAS MANIFOLD
2000 & 6000 SERIES (INDUSTRIAL)**

CONNECTION SIZE	2000 SERIES			
	2100 (MAXON)		2400 (KROMSCHRODER)	
	(scfh)	C _v	(scfh)	C _v
3/4 NPT	2,100	9.7	1,480	6.8
1 NPT	2,540	11.7	2,810	13.0
1-1/4 NPT	4,990	23.0	3,690	17.0
1-1/2 NPT	6,570	30.2	5,930	27.3
2 NPT	10,420	48.0	7,110	32.7
2-1/2 NPT	16,440	75.6	13,840	63.6
3 NPT	22,860	105	19,760	90.9
4" FLG	51,710	238	30,090	138
6" FLG	66,300	305	47,030	216

CONNECTION SIZE	6000 SERIES			
	6100 (MAXON)		6400 (KROMSCHRODER)	
	(scfh)	C _v	(scfh)	C _v
3/4 NPT	2,490	11.5	1,910	8.8
1 NPT	3,270	15.0	3,500	16.1
1-1/4 NPT	5,960	27.4	4,710	21.7
1-1/2 NPT	8,190	37.7	7,530	34.6
2 NPT	12,730	58.6	9,350	43.0
2-1/2 NPT	22,280	102	15,280	70.3
3 NPT	30,610	141	24,170	111
4" FLG	63,480	292	37,370	172
6" FLG	100,600	462	60,280	277

Metric Capacities
On Reverse Side

Notes:

- 2000 Series PGMs meet NFPA requirements for single burner or unison light-off multiple burner industrial applications and have dual safety shutoff valves.
- 6000 Series PGMs meet NFPA requirements for multiple burner industrial applications and have a single safety shutoff valve. In addition, a single safety shutoff valve with proof of closure and visual indication is required at each burner in a multiple burner application, and special features are required in the associated control system (see Hauck Application Sheet GJ76).
- Flange connections are ANSI 125 lb rated flanges.
- Electrical enclosure rating of the safety shutoff valve actuator is NEMA 4 for 2100 and 6100 Series PGMs, and IP 65 for 2400 and 6400 Series PGMs.
- Maximum inlet pressure to the 2100 and 6100 Series PGMs is **8.5 psig**, and for the 2400 and 6400 Series PGMs is **7.25 psig**.
- Flow based on natural gas with 0.59 s.g., 60°F, **2 psig** inlet pressure and **0.5 psig** pressure drop through the PGM; consult Hauck for different application conditions.
- To calculate Btu/hr throughput, multiply natural gas flow in scfh by actual higher heating value (HHV) in Btu/ft³.

In accordance with Hauck's commitment to Total Quality Improvement, Hauck reserves the right to change the specifications of products without prior notice.



PGM PREPIPED GAS MANIFOLD 3100 SERIES (ASPHALT)

CONNECTION SIZE	3100 (MAXON)	
	(scfh)	C _v
2 NPT	20,000	47.7
2-1/2 NPT	31,880	76.1
3 NPT	43,810	105
4" FLG	101,100	241
6" FLG	134,200	320
6" X FLG	224,100	535

Notes:

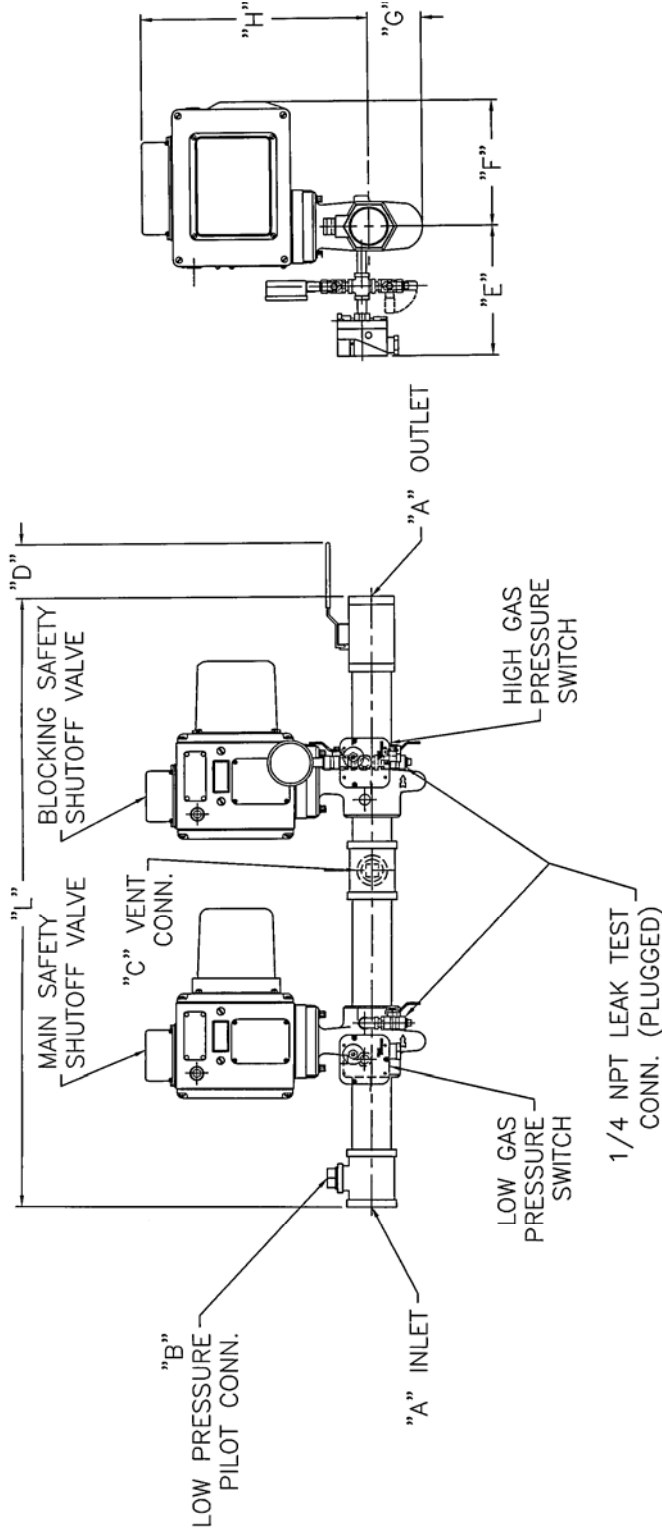
1. 3100 Series PGMs meet NFPA requirements for single burner asphalt applications and have dual automatic safety shutoff valves.
2. Flange connections are ANSI 125 lb rated flanges.
3. Electrical enclosure rating of the safety shutoff valve actuator is NEMA 4 for all 3100 Series PGMs.
4. Maximum inlet pressure to 3100 Series PGM is **8.5 psig**.
5. Flow based on natural gas with 0.59 s.g., 60°F, **5 psig** inlet pressure and **1.5 psig** pressure drop through the PGM; consult Hauck for different application conditions.
6. To calculate Btu/hr throughput, multiply natural gas flow in scfh by actual higher heating value (HHV) in Btu/ft³.

(Metric Capacities On Reverse Side)

In accordance with Hauck's commitment to Total Quality Improvement, Hauck reserves the right to change the specifications of products without prior notice.

**PGM PREPIPED GAS MANIFOLD
INDUSTRIAL - MAXON**

PGM 2100 SERIES



MODEL NO.	"A"	"B"	"C"	"D"	"E"	"F"	"G"	"H"	"L"
PGM 2107B	3/4 NPT		3/4 NPT	3 3/8		5 1/2	2 9/16	11 3/16	33 7/8
PGM 2110B	1 NPT			3 1/8	9 1/16	5 7/16			43
PGM 2112B	1 1/4 NPT	3/4 NPT	1 NPT	3 3/16			2 7/8	11 3/4	39 3/4
PGM 2115B	1 1/2 NPT			3 5/16				12 1/4	41 5/8
PGM 2120B	2 NPT	1 NPT		3 5/16	10 7/16		3 1/4	13 11/16	37 3/8
PGM 2125B	2 1/2 NPT	1 1/4 NPT	1 1/4 NPT	7 1/4	8 3/4	7 5/8	4 5/16	13 9/16	54 11/16
PGM 2130B	3 NPT			6 13/16	9		4 5/8	13 13/16	53 5/8
PGM 2140B	4" FLG	2 NPT	2 NPT	10			5 9/16	15 5/16	60 5/8
PGM 2160B	6" FLG	2 1/2 NPT	2 1/2 NPT	12 1/4	8 15/16	10 5/8	6 7/8		74 3/4

NOTES: 1. FLANGE CONNECTIONS ARE ANSI 125 LB RATED FLANGES.

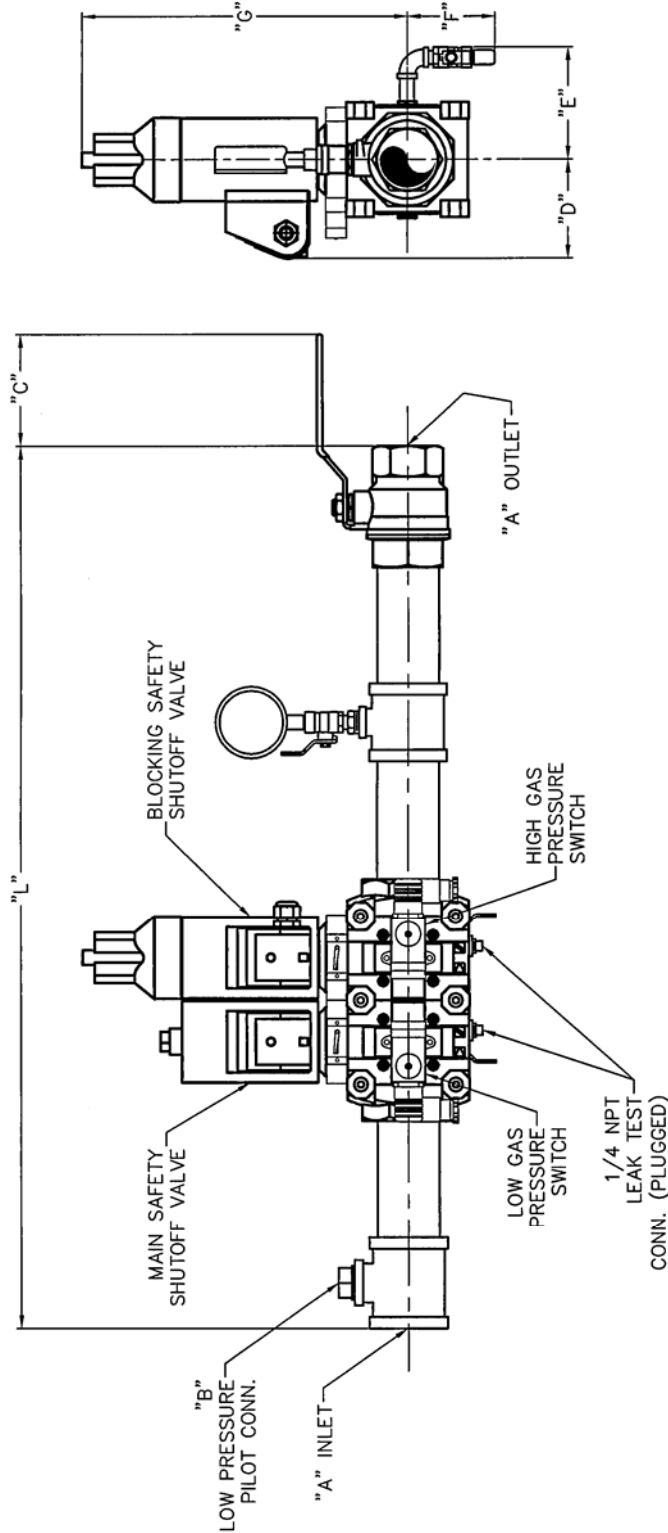
X3298
(NOT TO SCALE)

(See Reverse Side For Metric Dimensions)

In accordance with Hauck's commitment to Total Quality Improvement, Hauck reserves the right to change the specifications of products without prior notice.

**PGM PREPIPED GAS MANIFOLD
INDUSTRIAL - KROMSCHRODER**

PGM 2400 SERIES



MODEL NO.	"A"	"B"	"C"	"D"	"E"	"F"	"G"	"L"
PGM 2407	3/4 NPT	3 3/8	2 17/32	3 11/32	3 11/32	9 1/16	22 23/32	22 23/32
PGM 2410	1 NPT	3 1/8	3 11/32	4	3 11/32	10 1/32	22 27/32	22 27/32
PGM 2412	1 1/4 NPT	3 3/16	3 11/32	4 1/4		12 1/2	29 7/32	29 7/32
PGM 2415	1 1/2 NPT	3 5/16	3 25/32	4 5/16		14 3/4	34 23/32	34 23/32
PGM 2420	2 NPT	7 1/4	4 1/8	5 1/16	3 1/2	15 1/8	33 31/32	33 31/32
PGM 2425	2 1/2 NPT	6 13/16	4 5/32	5 3/8	3 23/32	17 17/32	38 11/32	38 11/32
PGM 2430	3 NPT	10	4 7/8	6 1/16	4 29/32	17 17/32	42 3/32	42 3/32
PGM 2440	4" FLG	2 NPT	12 1/4	5 1/2	6 23/32	6 9/16	46 31/32	46 31/32
PGM 2460	6" FLG	2 1/2 NPT	12 1/4	5 1/2	6 23/32	6 9/16	62 1/2	62 1/2

Y8195
(NOT TO SCALE)

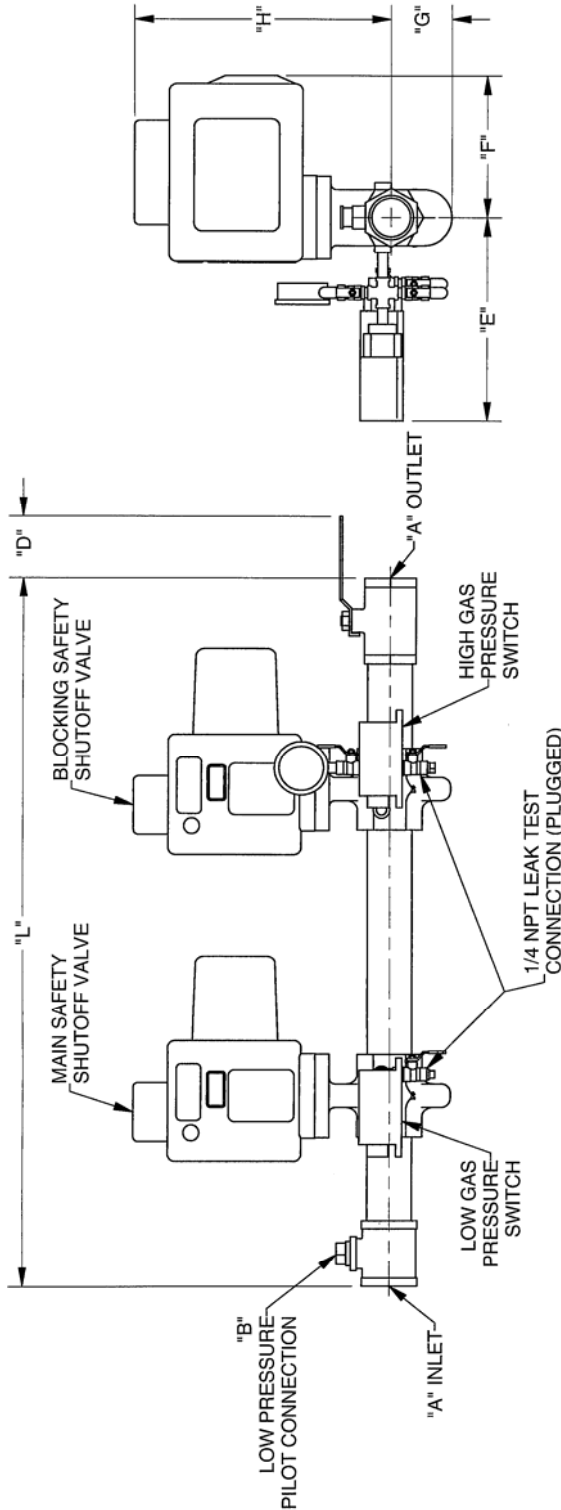
NOTES: 1. FLANGE CONNECTIONS ARE ANSI 125 LB RATED FLANGES.

(See Reverse Side For Metric Dimensions)

In accordance with Hauck's commitment to Total Quality Improvement, Hauck reserves the right to change the specifications of products without prior notice.

**PGM PREPIPED GAS MANIFOLD
ASPHALT - MAXON**

PGM 3100 SERIES



MODEL NO.	"A"	"B"	"D"	"E"	"F"	"G"	"H"	"L"
PGM 3120B	2 NPT	1 NPT	3 5/16	10 15/16	7 5/8	3 1/4	13 11/16	37 7/8
PGM 3125B	2 1/2 NPT	1 1/4 NPT	7 1/4	11 5/16	7 5/8	4 5/16	13 9/16	50 7/16
PBM 3130B	3 NPT	1 1/4 NPT	6 13/16	11 1/2	7 5/8	4 5/8	13 13/16	51 5/8
PGM 3140B	4 FLG	2 NPT	10	11 5/8	10 5/8	5 9/16	15 5/16	57 3/4
PGM 3160B	6 FLG	2 1/2 NPT	12 1/4	11 5/8	10 5/8	6 7/8	15 5/16	70
PGM 3160BX	6 FLG	2 1/2 NPT	12 1/4	12 5/16	8 5/8	7 5/16	23 7/8	70

NOTE: 1. FLANGE CONNECTIONS ARE ANSI 125 LB RATED FLANGES.

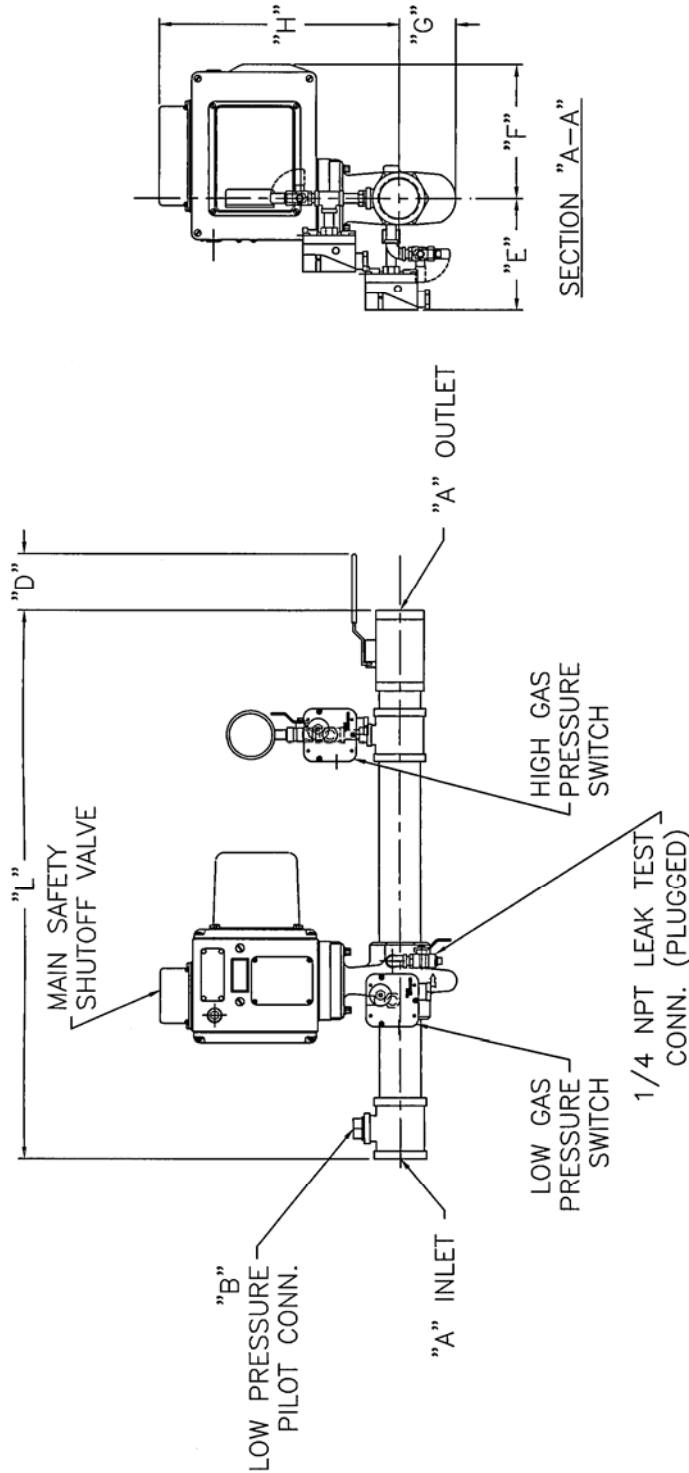
X3914
(NOT TO SCALE)

(See Reverse Side For Metric Dimensions)

In accordance with Hauck's commitment to Total Quality Improvement, Hauck reserves the right to change the specifications of products without prior notice.

**PGM PREPIPED GAS MANIFOLD
INDUSTRIAL - MAXON**

PGM 6100 SERIES



MODEL NO.	"A"	"B"	"D"	"E"	"F"	"G"	"H"	"L"
PGM 6107	3/4 NPT		3 3/8		5 1/2	2 9/16	11 3/16	26 1/16
PGM 6110	1 NPT	3/4 NPT	3 1/8	9 1/16	5 7/16	2 7/8	11 3/4	26 7/16
PGM 6112	1 1/4 NPT		3 3/16				12 1/4	28 7/8
PGM 6115	1 1/2 NPT		3 5/16	10 7/16			13 11/16	31 3/8
PGM 6120	2 NPT	1 NPT	7 1/4	8 3/4	7 5/8	3 1/4	13 9/16	31 1/2
PGM 6125	2 1/2 NPT	1 1/4 NPT	6 13/16	9		4 5/8	13 13/16	38 5/16
PGM 6130	3 NPT		10	8 15/16	10 5/8	5 9/16	15 5/16	44 1/2
PGM 6140	4" FLG	2 NPT	12 1/4			6 7/8		51 15/16
PGM 6160	6" FLG	2 1/2 NPT						

X6921
(NOT TO SCALE)

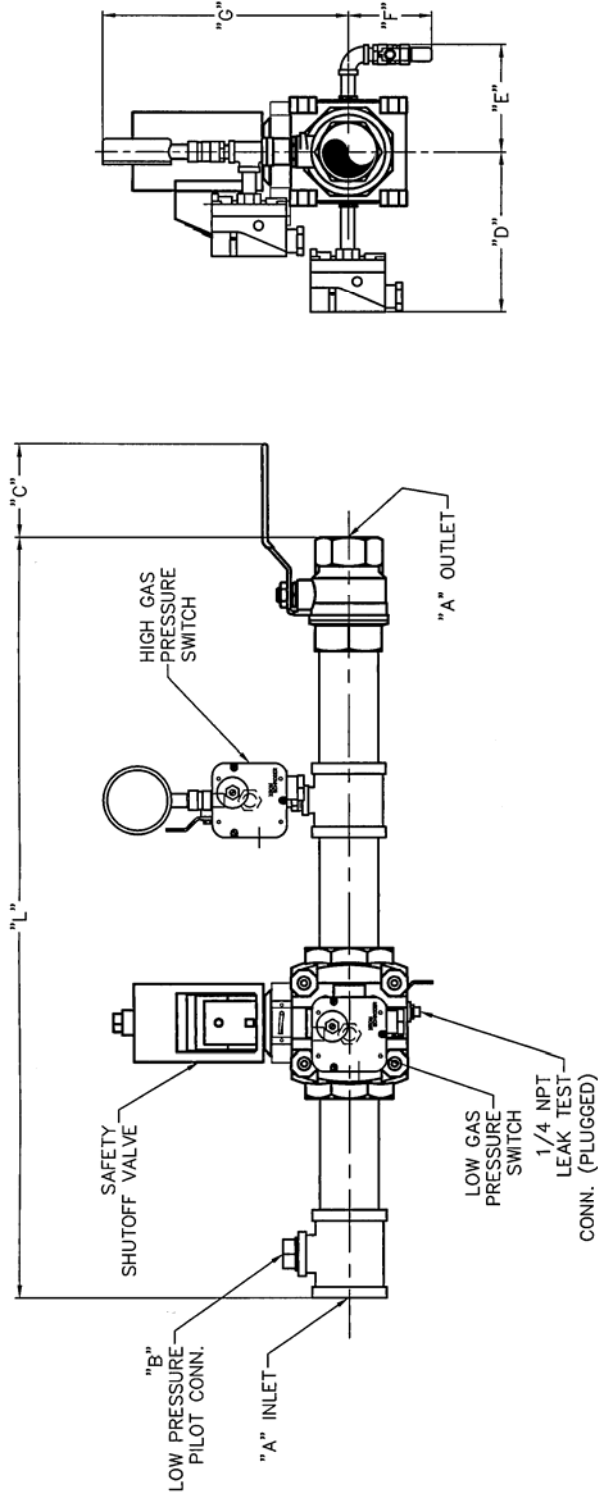
NOTES: 1. FLANGE CONNECTIONS ARE ANSI 125 LB RATED FLANGES.

(See Reverse Side For Metric Dimensions)

In accordance with Hauck's commitment to Total Quality Improvement, Hauck reserves the right to change the specifications of products without prior notice.

**PGM PREPIPED GAS MANIFOLD
INDUSTRIAL - KROMSCHRODER**

PGM 6400 SERIES



MODEL NO.	"A"	"B"	"C"	"D"	"E"	"F"	"G"	"L"
PGM 6407	3/4 NPT		3 3/8	5 21/32	3 11/32		8 23/32	20 11/32
PGM 6410	1 NPT		3 1/8	6 1/4	4	3 11/32	9 19/32	21 3/32
PGM 6412	1 1/4 NPT	3/4 NPT	3 3/16	6 17/32	4 1/4		9 23/32	26 1/2
PGM 6415	1 1/2 NPT		3 5/16	7 1/4	4 5/16		9 29/32	31 15/32
PGM 6420	2 NPT	1 NPT	7 1/4	4 1/16	4 1/8	3 1/2	12 5/32	30 23/32
PGM 6425	2 1/2 NPT	1 1/4 NPT	6 13/16	4 11/16	5 3/4	3 23/32	12 1/2	34 13/32
PGM 6430	3 NPT	2 NPT	10	4 7/8	6 1/8	4 29/32	14 3/4	37 7/8
PGM 6440	4" FLG	2 1/2 NPT	12 1/4	5 1/2	7 1/8	6 9/16	15 1/2	42 7/32
PGM 6460	6" FLG							56 3/4

NOTES: 1. FLANGE CONNECTIONS ARE ANSI 125 LB RATED FLANGES.

Y8206
(NOT TO SCALE)

(See Reverse Side For Metric Dimensions)

In accordance with Hauck's commitment to Total Quality Improvement, Hauck reserves the right to change the specifications of products without prior notice.



**PGM PREPIPED GAS MANIFOLD
3100 SERIES PGM SELECTION
FOR ASPHALT BURNERS**

ECO-STAR BURNERS

BURNER			3100 SERIES PGM	
MODEL NO.	CAPACITY (MMBtu/hr)	NATURAL GAS FLOW (scfh)	MODEL NO.	NATURAL GAS FLOW (scfh)
ES 25	25	24,180	3125	31,880
50	50	48,360	3130*	43,810
ESII 75	75	72,530	3140	101,100
100	100	96,710	3140	101,100
125	125	120,900	3160	134,200
150	150	145,100	3160*	134,200
175	175	169,200	3160X	224,100
200	200	193,400	3160X	224,100

STARJET BURNERS

BURNER			3100 SERIES PGM	
MODEL NO.	CAPACITY (MMBtu/hr)	NATURAL GAS FLOW (scfh)	MODEL NO.	NATURAL GAS FLOW (scfh)
SJ 075	15.3	14,620	3120	20,000
150	28.0	26,830	3125	31,880
200	40.6	38,940	3125*	31,880
260	49.5	47,400	3130*	43,810
360	75.9	72,690	3140	101,100
520	97.2	93,080	3140	101,100
580	120	115,400	3160	134,200
750	151	144,200	3160*	134,200
980	201	192,300	3160X	224,100

NOTES:

1. Burner capacities based on natural gas with HHV of 1034 Btu/ft³, 0.59 s.g., and 60°F.
2. PGM natural gas flows based on natural gas with 0.59 s.g., 60°F, **5 psig** inlet pressure and **1.5 psig** pressure drop through PGM.
3. To achieve the capacity for a given burner, PGMs identified with an asterisk (*) require a gas inlet pressure greater than **5 psig**, however, in no case should the gas inlet pressure requirement exceed **6 psig**.

(Metric Data On Reverse Side)

In accordance with Hauck's commitment to Total Quality Improvement, Hauck reserves the right to change the specifications of products without prior notice.