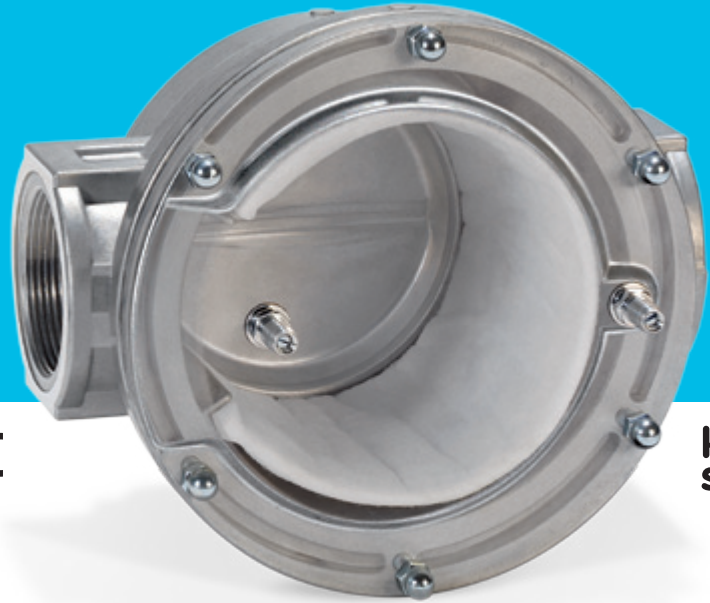


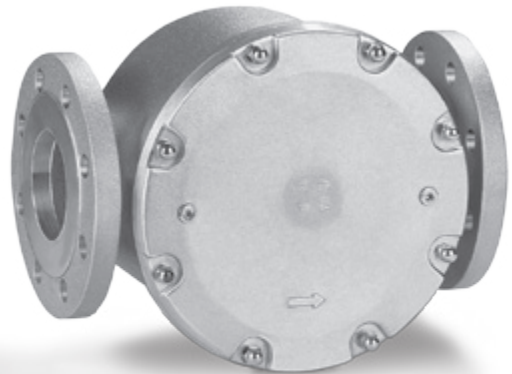


# Gas filter GFK

Product brochure · GB  
1.2.1.2 Edition 01.12



- For the protection of downstream devices against blockage
- Very high throughput
- High purification efficiency
- Long life
- Easy-to-replace filter pad
- EC type-tested and certified





GFK..R

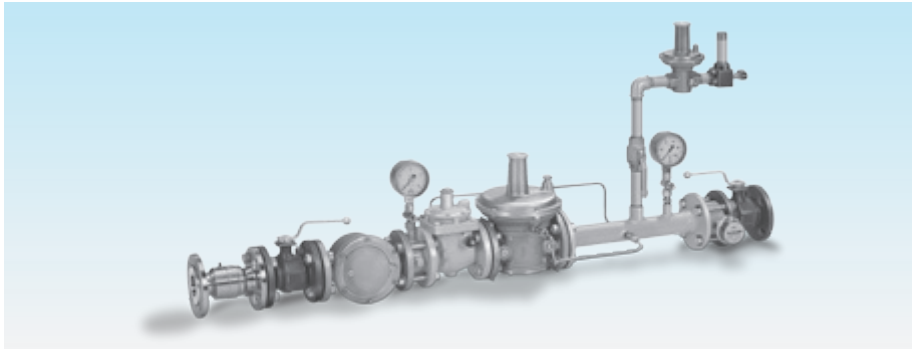


GFK..F

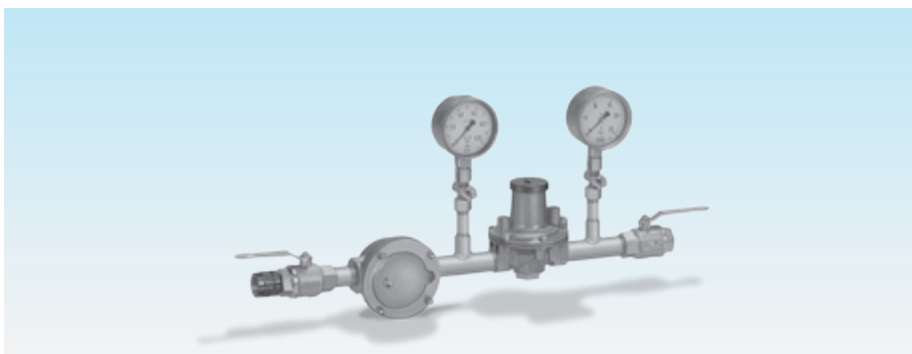
## Application

Suitable for filtration of the fuel gas and combustion air supply to all gas consuming appliances.

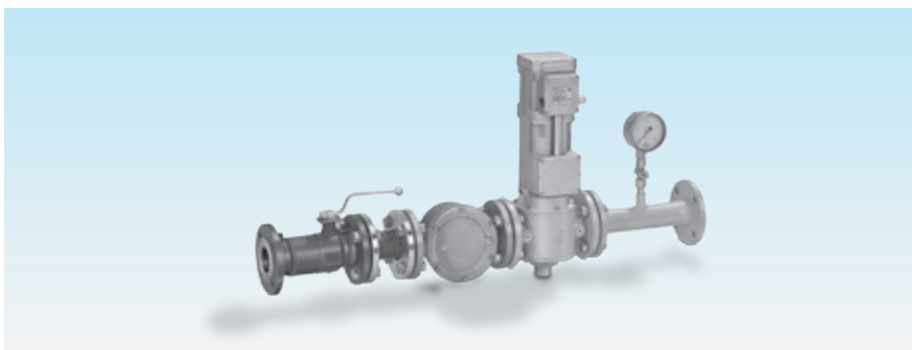
## Application examples



*Gas pressure control system with GFK..F*



*Pressure control system with GFK..R*



*Main gas shut-off device with GFK..F*

## Selection

### Standard-range

	10	40	60	-3	-6
GFK 15R	●	●			●
GFK 20R	●	●			●
GFK 25R	●	●			●
<b>GFK 32R</b>	●	●			●
GFK 40R	●	●			●
GFK 50R	●	●			●
GFK 65R	●	●			●
GFK 40F	●		●		●
GFK 50F	●		●		●
GFK 65F	●		●		●
GFK 80F	●		●		●
GFK 100F	●		●		●
GFK 125F	●			●	
GFK 150F	●			●	
GFK 200F	●			●	
GFK 250F	●			●	

### Order example

**GFK 32R10-6**

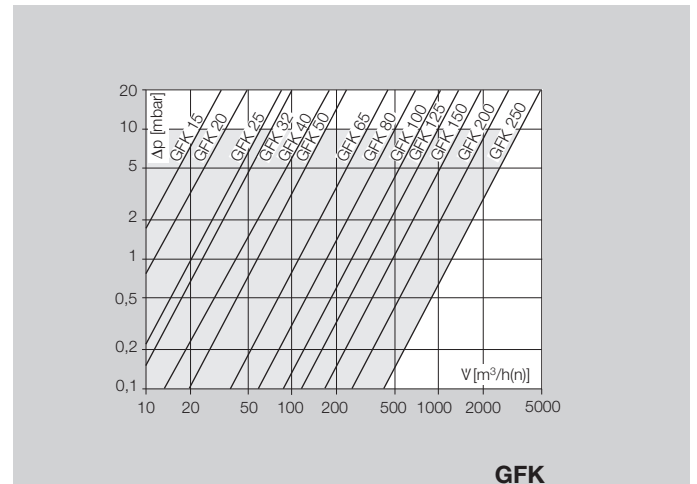
### T-Product range

	N	A	40	-3
GFK 15T	●		●	●
GFK 20T	●		●	●
GFK 25T	●		●	●
<b>GFK 40T</b>	●		●	●
GFK 50T	●	●	●	●
GFK 65T	●	●	●	●
GFK 80T		●	●	●
GFK 100T		●	●	●

### Order example

**GFK 40TN40-3**

## Flow rate





## Technical data

Gas type:  
natural gas, town gas, LPG (gaseous), bio-  
logically produced methane and air.

Max. inlet pressure  $p_e$ :  
1 bar GFK 15 to 250,  
4 bar (60 psig) GFK 15 to 65,  
GFK 15T to 100T,  
6 bar GFK 40 to 100.

Ambient temperature:  
-15 to +80°C (5 to 176°F).

Continuous operation at high tempera-  
tures accelerates the ageing of elastomer  
materials.

### Version to DIN 3386

#### Housing

GFK 15 to 100 made from AlSi.  
GFK 125 to 250 made from sheet steel.  
GFK..R: Rp internal thread connection to  
ISO 7-1.  
GFK..F: flanged connection to ISO 7005,  
PN 16.  
GFK..N: NPT internal thread.  
GFK..A: ANSI 150 flanged connection.  
Filter pad: polypropylene fleece  
(standard 50 µm).

#### Pressure test points on the cover

GFK 15 to 100:  
Inlet side: Rp 1/8 pressure test nipple,  
Outlet side: Rp 1/8 pressure test nipple.  
GFK 125 to 250:  
Inlet side: Rp 1/8 plug,  
Outlet side: Rp 1/8 plug.  
GFK 15T to 100T:  
Inlet side: Rp 1/8 plug,  
Outlet side: Rp 1/8 plug.

## Maintenance cycles

Change filter pad once per annum, twice per  
annum for biologically produced methane, or  
in case the pressure differential on the gas  
filter has risen by 100% compared to when  
new,  $\Delta p_{max} = 20$  mbar.

## Detailed information on this product

[www.docuthek.com](http://www.docuthek.com) → Direct access

Search term: GFK

Kind of document: Technical information

## Contact

[www.kromschroeder.com](http://www.kromschroeder.com) → Sales

Elster GmbH  
Postfach 2809 · 49018 Osnabrück  
Strothweg 1 · 49504 Lotte (Büren)  
Germany

T +49 541 1214-0  
F +49 541 1214-370  
[info@kromschroeder.com](mailto:info@kromschroeder.com)  
[www.kromschroeder.com](http://www.kromschroeder.com)  
[www.elster.com](http://www.elster.com)

We reserve the right to make technical modifications  
in the interests of progress.

Copyright © 2012 Elster Group  
All rights reserved.